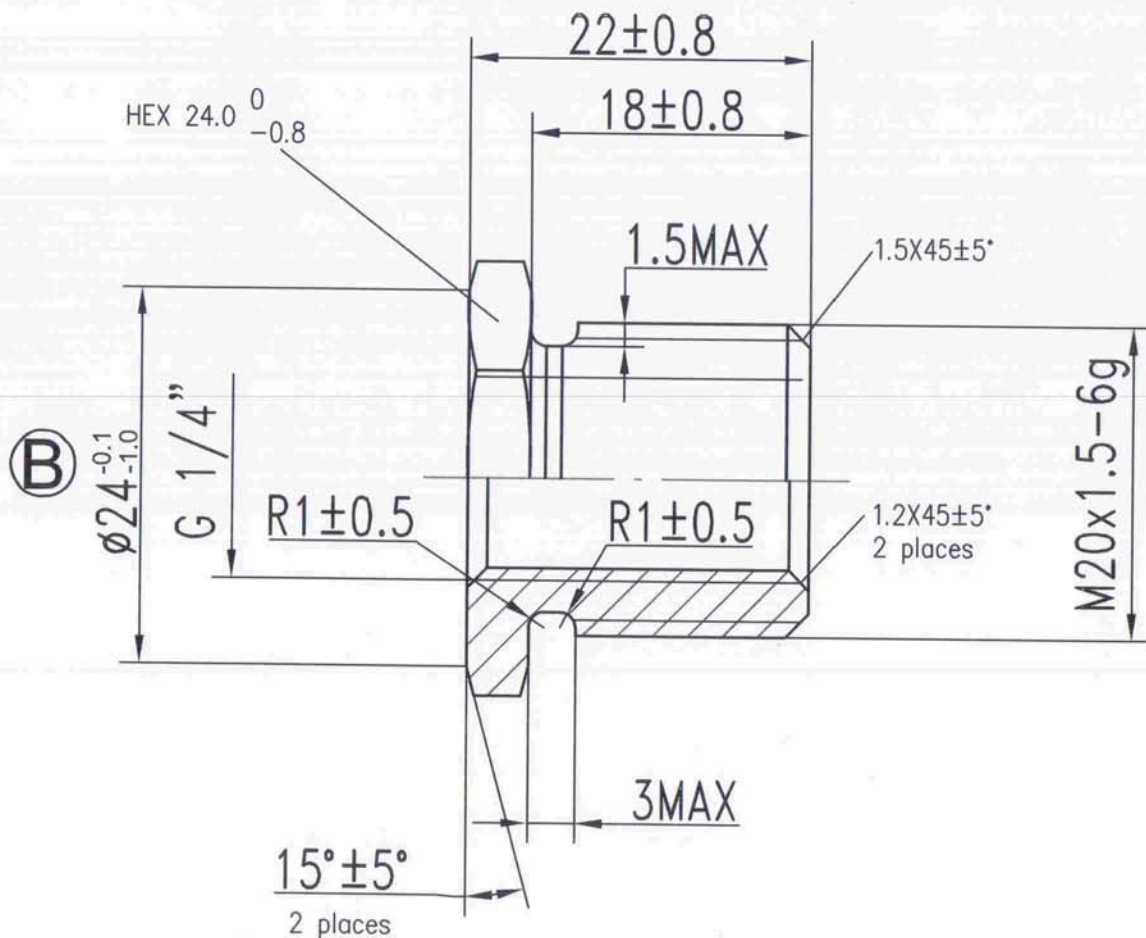


REV 更改号	DATE 日期	REVISION DETAILS 更改内容	APPD 审核并批准
A	20170206	PRODUCTION ISSUE	
B	20170303	Change the tolerance from -1/-0.5 to -0.1/-1.0	



UNLESS SPECIFIED  
ALL DIMENSIONS IN mm,  
MACHINED SURFACES Ra=3.2um,  
ANGLE TOLERANCES ±1°,  
Other tolerance except angles,  
in accordance with  
GB/T1804-2000(ISO2768-1)-m  
and GB/T1184-1996(ISO2768-2)-m

其它事项,  
图示尺寸单位为mm,  
未注机加工表面粗糙度 Ra=3.2um,  
未注角度公差 ±1°,  
其它未注公差 (除角度外) 均按:  
GB/T1804-2000(ISO2768-1)-m 和  
GB/T1184-1996(ISO2768-2)-m

Yuhuan Getal Machinery Co.,Ltd		
PART No 零件名	41211-M20-G4	
SCALE:	APPD: 批准	DRN: 制图
NTS	DATE: 日期 20170303	CHK: 审核

MATERIAL Chinese brass HPb59-3

FINISH Remove all sharp edges,burrs,silvers and swarf, break all edges 0.127-0.254mm.

去除所有毛刺, 铁屑等残留物, 锐边倒钝C. 127-0.254mm.